

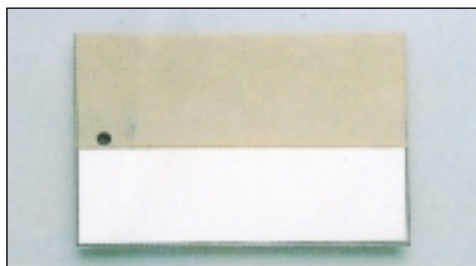
# LIQUID PENETRANT TESTING ESSENTIALS



## NI-CR TEST PANELS (JAPANESE)

For evaluating penetrant system performance and sensitivity. Available in four types of flaw depths of 10, 20, 30 or 50 microns. Set consists of 2 matching test panels. Provided with manufacturers test certificate.

	Part No.		Part No.
10μ	506251	30μ	506253
20μ	506252	50μ	506254



## TAM PANEL PART NO. 198055

A fast and reliable means of monitoring the proper functioning of a liquid penetrant system. Stainless Steel panel with 5 star shaped flaws of decreasing size on one half, with rough sand blasted surface on other half - for checking sensitivity & removability of penetrants. Meets Pratt and Whitney specifications.



## UV-ABSORBING SPECTACLES PART NO. 506249

Reduce eye fatigue from exposure to UV light emission.



## BLACK LIGHT SYSTEM-ZB 100F PART. NO. 260028

100 watts hand-held model includes transformer, cord and plug. Typical Black Light out-put 4,000 uw/cm<sup>2</sup>, white light emission less than 1 ft. candle. Plastic air Flo Bezel protects operator and filter glass. Meets U.S. Military standards.



## SPOT MENISCUS KIT. PART NO. 240045

Used to check the sensitivity of the penetrant. The penetrant when sandwiched between lens and a plain glass will show a white spot. Smaller the white spot, better the sensitivity.



## DIGITAL LIGHT METER. DSE-100X. PART NO. 519567

Accurately measures both white light (Foot candles) and black light (Micro watts/cm<sup>2</sup>). Includes Digital Radiometer/Photometer, Black light & white light sensors. meets ASTM E 1444. Also available **Digital Black light meter DM-365X. Part No. 507522.**



## ADJUSTABLE SWIVEL FIXTURE FOR BLACK LIGHT - ZB 100 PART. NO. 250032

Fits on any standard Magnaflux bench unit. Enables the black light to be positioned at most convenient angle for inspecting component.

# MAGNAFLUX®

# MAGNETIC PARTICLE INSPECTION ESSENTIALS



## RESIDUAL FIELD INDICATORS

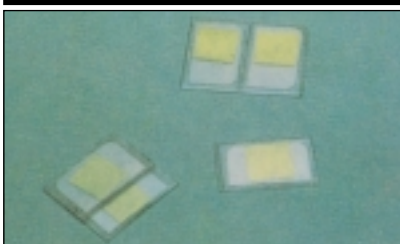
The pocket size meters used to indicate residual magnetism.

		Part No.
Uncalibrated	0 - 10 Gauss	2480
Calibrated	0 - 10 Gauss	505056
Calibrated	0 - 20 Gauss	105645



## ASME FIELD INDICATOR (PIE GAUGE) PART NO. 169799

Used to establish adequacy and direction of magnetic field on test part surface. Meets ASTM E 1444.



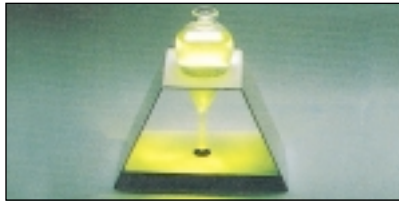
## QUANTITATIVE QUALITY INDICATORS (SHIMS)

Artificial flaw shims improve inspection reliability by verifying magnetic field direction and relative strength at all critical areas of a component. Basic circular and cross bar flaws configuration suitable for longitudinal and circular fields.

	Part No.
KSC - 230	519630
KSCT - 234	519632

QQI'S meet ASTM E-1444, MIL STD-1949.

**Dealer:**



## CENTRIFUGE TUBE AND STAND

Essential items in ascertaining bath concentration.

Part Nos.	For use with
240042	Magnaflux 7C.9C.271 and 291 powder
240043	Magnaglo 14A and 20B powders.
240044	Magnaglo MG-410 and 2410.



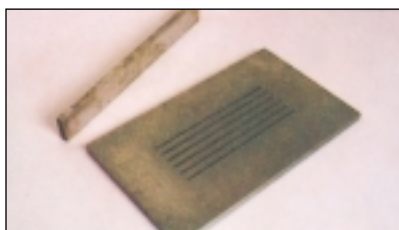
## CONTACT BLOCK ADAPTOR. PART NO. 240050

Clamps between the headstock and tailstock of the bench unit. Allows clamps and leeches to be attached.



## PUFFER BULB PART NO. 240011

Light weight, easy-to-use spray bulb, for applying Magnaflux dry method powders. Removable cap with fine holes for even spray.



## MPI TEST BAR/MPI TEST BLOCK

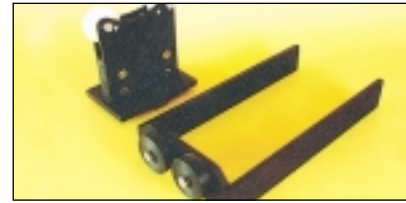
Contains artificial discontinuities for Magnetic particle Inspection.

### MPI TEST BAR - PT. NO : 240000

Used for Yoke & coil type of magnetization.

### MPI TEST BLOCK - PT. NO: 240037

Used for Prod type magnetization. Meets BHEL requirements.



## STEADY RESTS FOR '900 SERIES'

The twin rollers of steady rests allow rotation of test parts. Part Nos. 240062 (Headstock) : 240024 (Rail) : 240063 (Tail mounted)



## KETOS TEST RING PART NO. 159999

Drilled holes simulate sub/surface discontinuities. Forms surface indications at various magnetising current levels, as per MIL-STD-1949 and ASTM E-1444, for evaluating sensitivity of magnetic particles.



## COPPER BRAIDED PADS PART NO. 240038

'900 Series' Bench units employ copper braided pads to prevent burning by ensuring good electrical contact between test part and contact plates.



## CONTACT CLAMPS PART. NO. 240051

Specifically designed for accurate and convenient clamping on tubes, bars and other parts. Spring loaded with braided copper jaw pad to provide good electrical contact. Suitable for use on components upto 50mm dia. Max. rating 1000 amps. Magnetising Cables available separately.

## ITW India Limited

Plot No. 34-37, Phase-2, IDA, APIIC, Pashamylaram 502 307 India  
Telephone: 08455-26089, 26055, Facsimile: 08455-26336

email: itwpsmm@hd2.vsnl.net.in • Customer Cell: 98480-15373, 98480-90001, Visit us at : www.magnaflux.com

**Registered Office:** 3rd Floor, Merchant Towers, 5 Road No.4, Banjara Hills, Hyderabad 500 034

**Branches:** Bangalore: 2240490/2242304 • Baroda : 322495-7 • Chennai: 4723863/4725313 • Hyderabad: 3353781  
Kolkata: 4765016/4765020 • Mumbai: 4449502/4449503 • New Delhi: 6424984/6428646 • Pune: 5884743/5889021

*In Collaboration With :*

# MAGNAFLUX®

**A Division of Illinois Tool Works Inc.**